



What will happen after NIRSpec delivery?





NIRSpec delivery – mid. 2013

JWST launch – end 2018

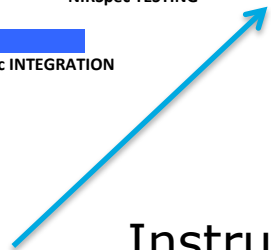
- **What will happen to NIRSpec (and JWST) during these 5 years is a very common (and legitimate) question.**
 - Many people believe that the instruments will be stored for a few years.
- In fact it takes several years to integrate and test a satellite like JWST, so, not a dull moment for the instruments!**



The path of NIRSpec in the high-level JWST schedule

2012	2013	2014	2015	2016	2017	2018	2019	2020 and beyond
------	------	------	------	------	------	------	------	-----------------

Only the path of NIRSpec is shown. Plenty of activities are actually running in parallel!



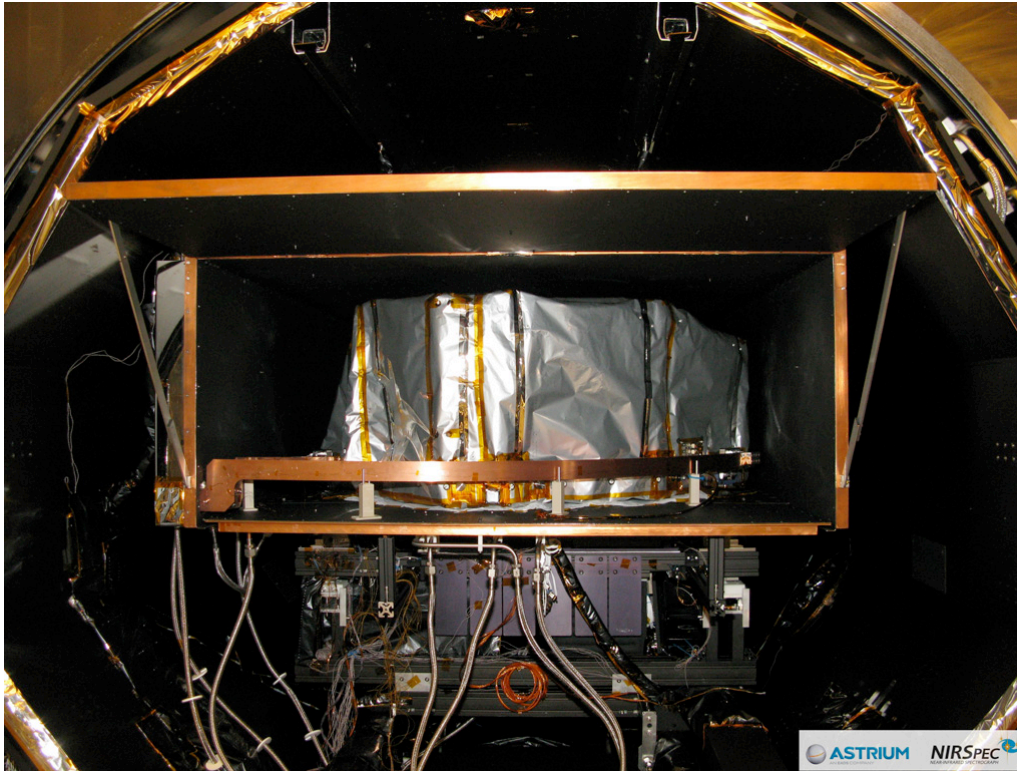
Instrument-level activities

Progressive integration of JWST...

No real wait time! However, schedule margins are included.



Testing equipment image gallery... From big to even bigger...



NIRSpec FM1 in its cryogenic chamber

You can put someone in the chamber (and we did...).

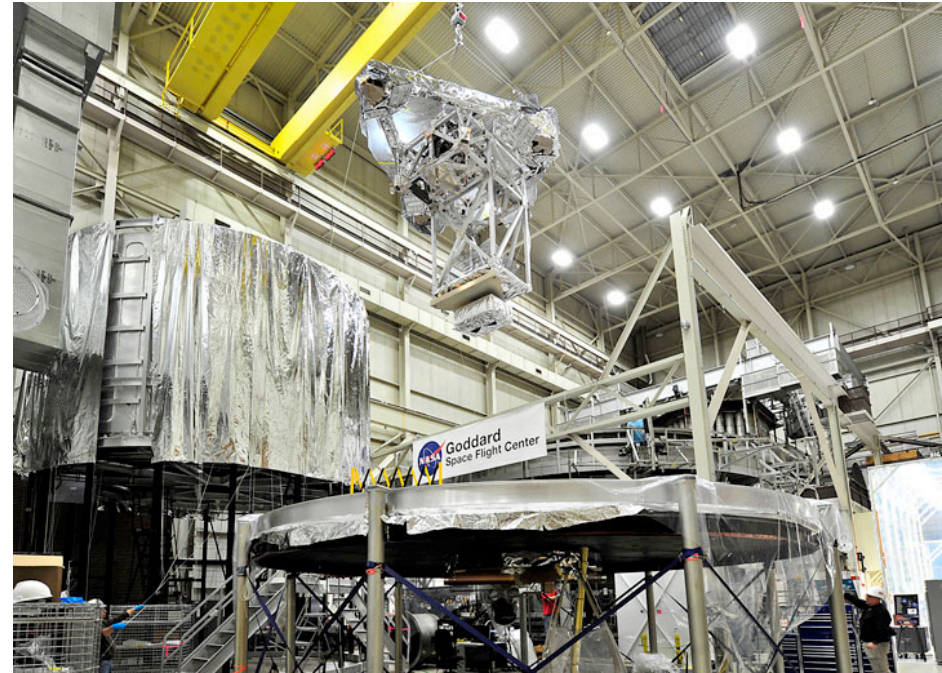
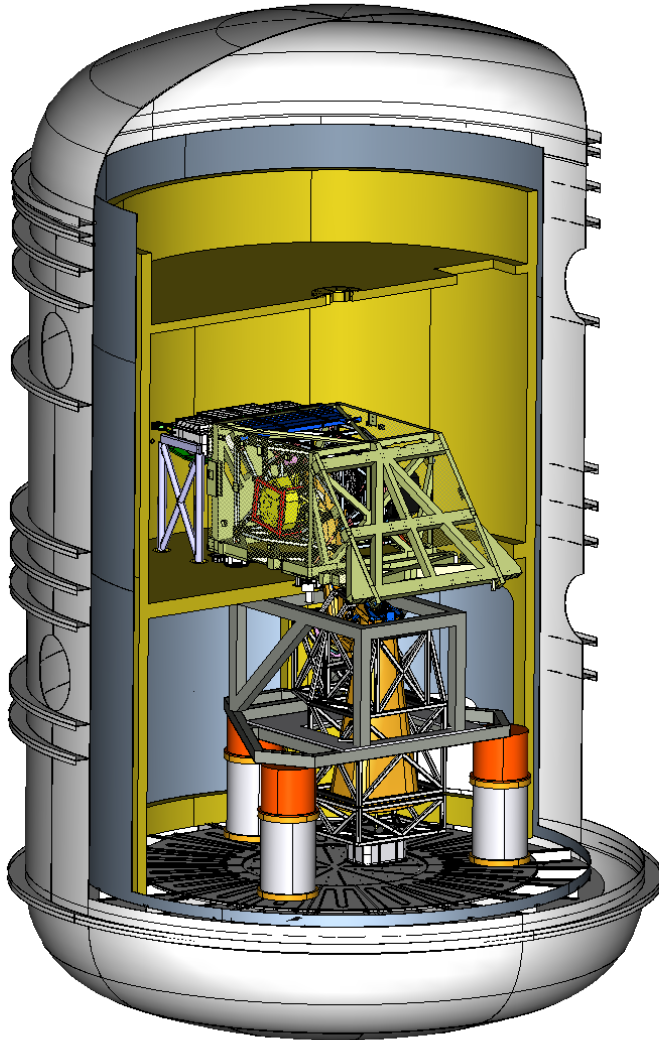
Instrument-level testing...



Testing equipment image gallery... From big to even bigger...

James Webb Space Telescope

18-meter high



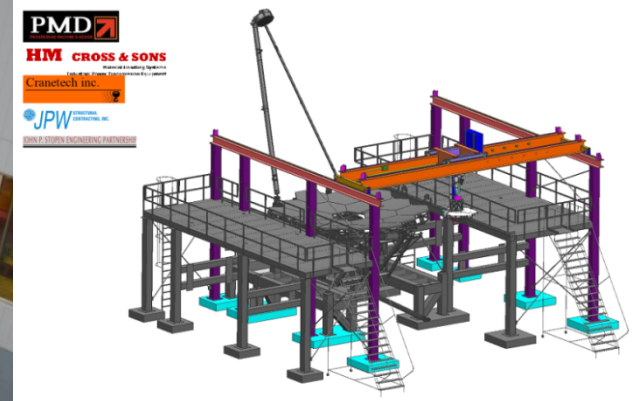
This is becoming cosy...

ISIM-level testing...



Testing equipment image gallery... From big to even bigger...

James Webb Space Telescope



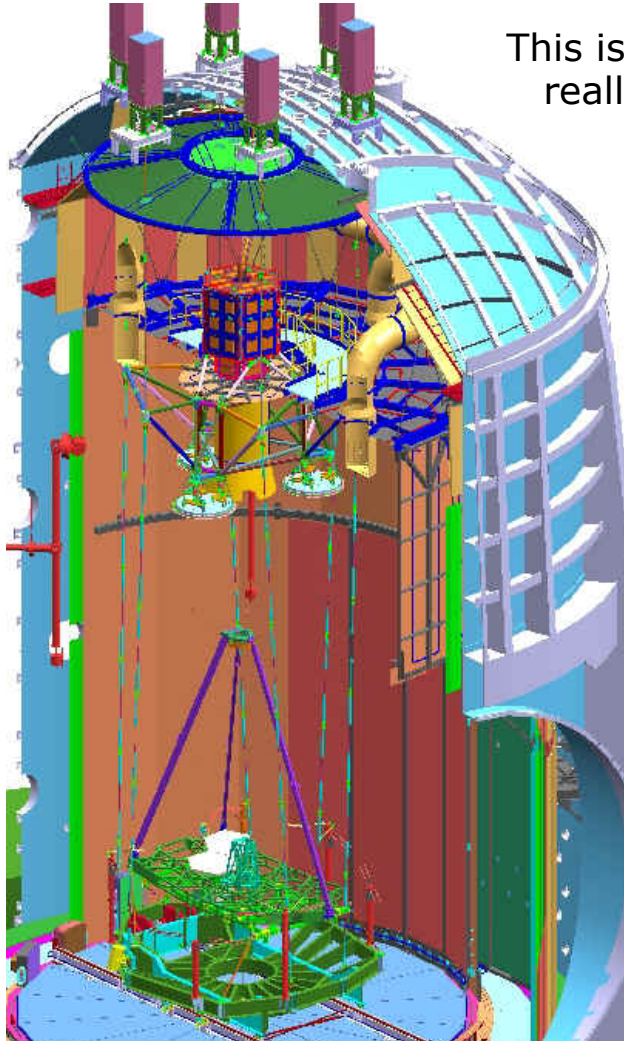
Assembling the primary mirrors on their structure.



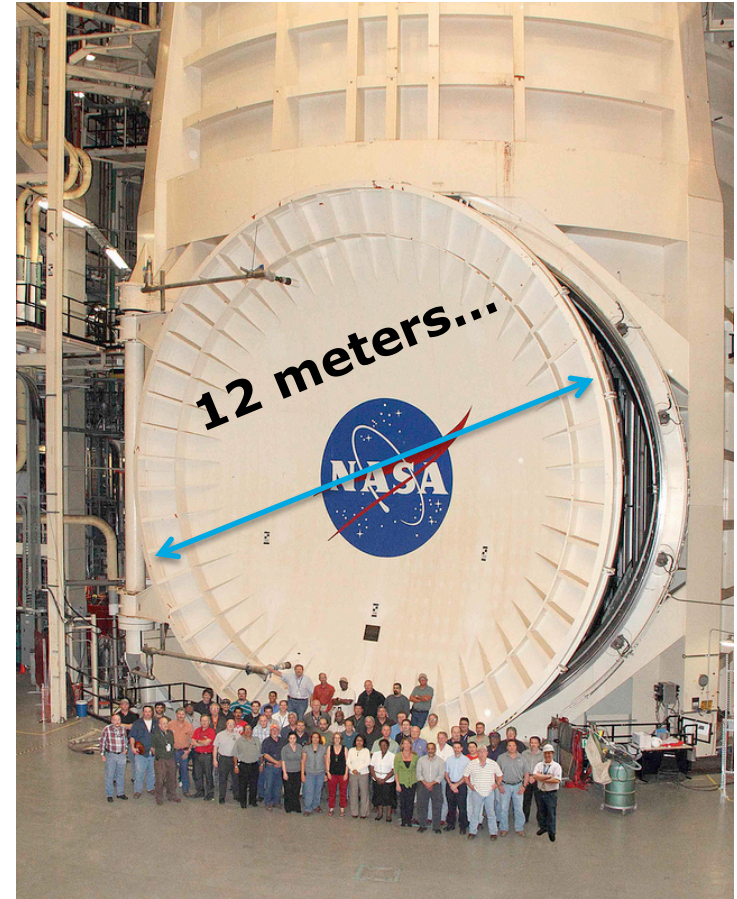
Testing equipment image gallery... From big to even bigger...

James Webb Space Telescope

Almost 35-meter high!



This is becoming
really huge...



OTIS-level testing...