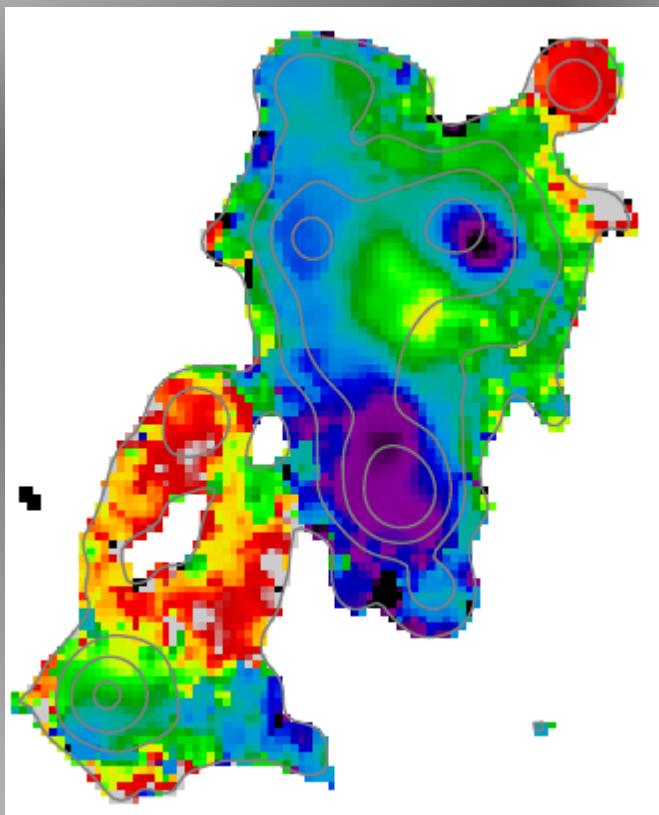


MUSE
multi unit spectroscopic explorer

B. Epinat (IRAP/LAM)
& the MUSE collaboration



ETH



Extended ionised gas structure
in a $z \sim 0.7$ galaxy group



Extended ionised region

Group @ $z \sim 0.7$

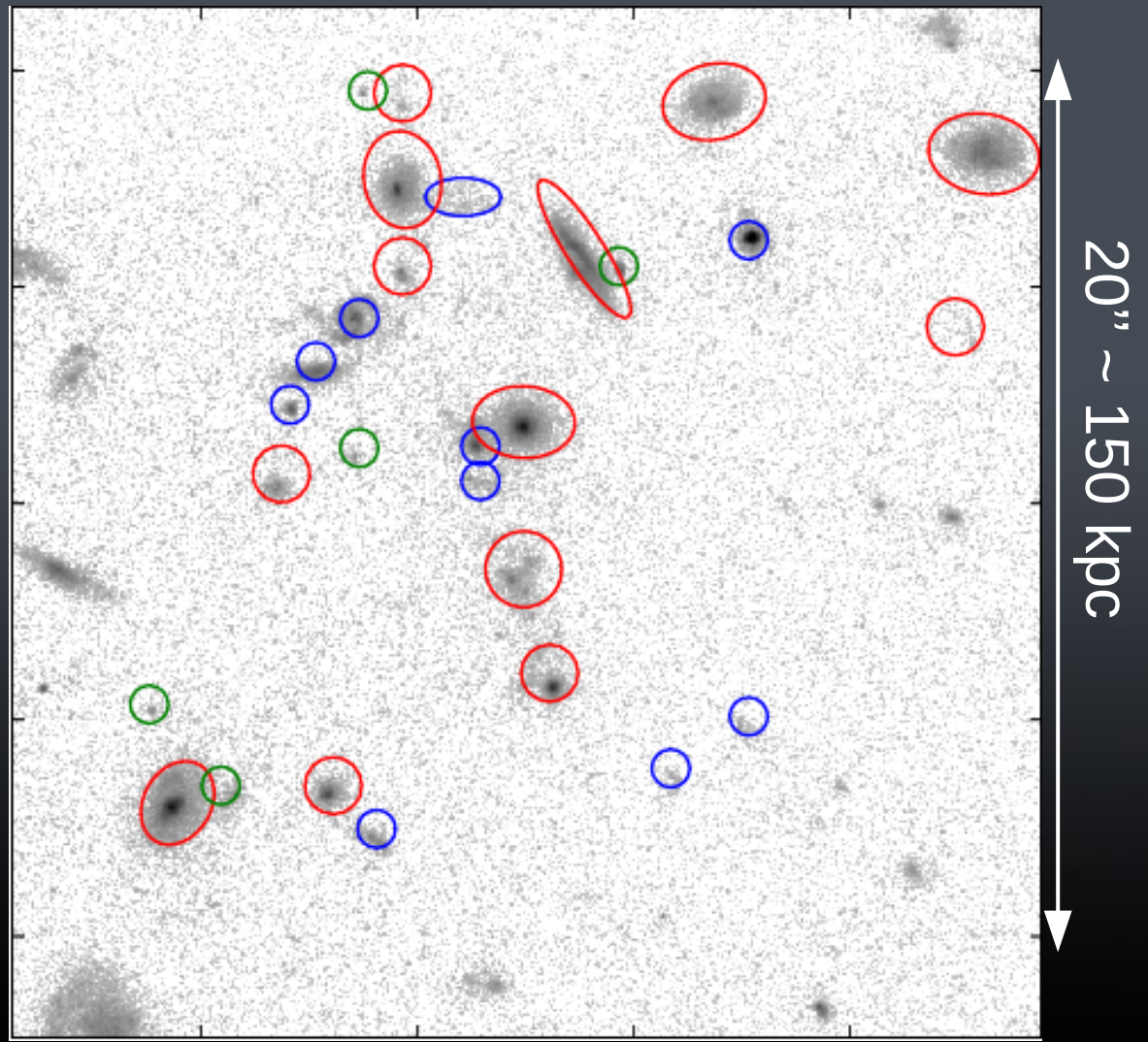
MUSE data:

Observations: 9.75h

Seeing : 0.5'' to 0.9''

HST/ACS image F814W

- Red:** group members
- Blue:** secure foreground and background galaxies
- Green:** no secure redshift



Extended ionised region

Group @ $z \sim 0.7$

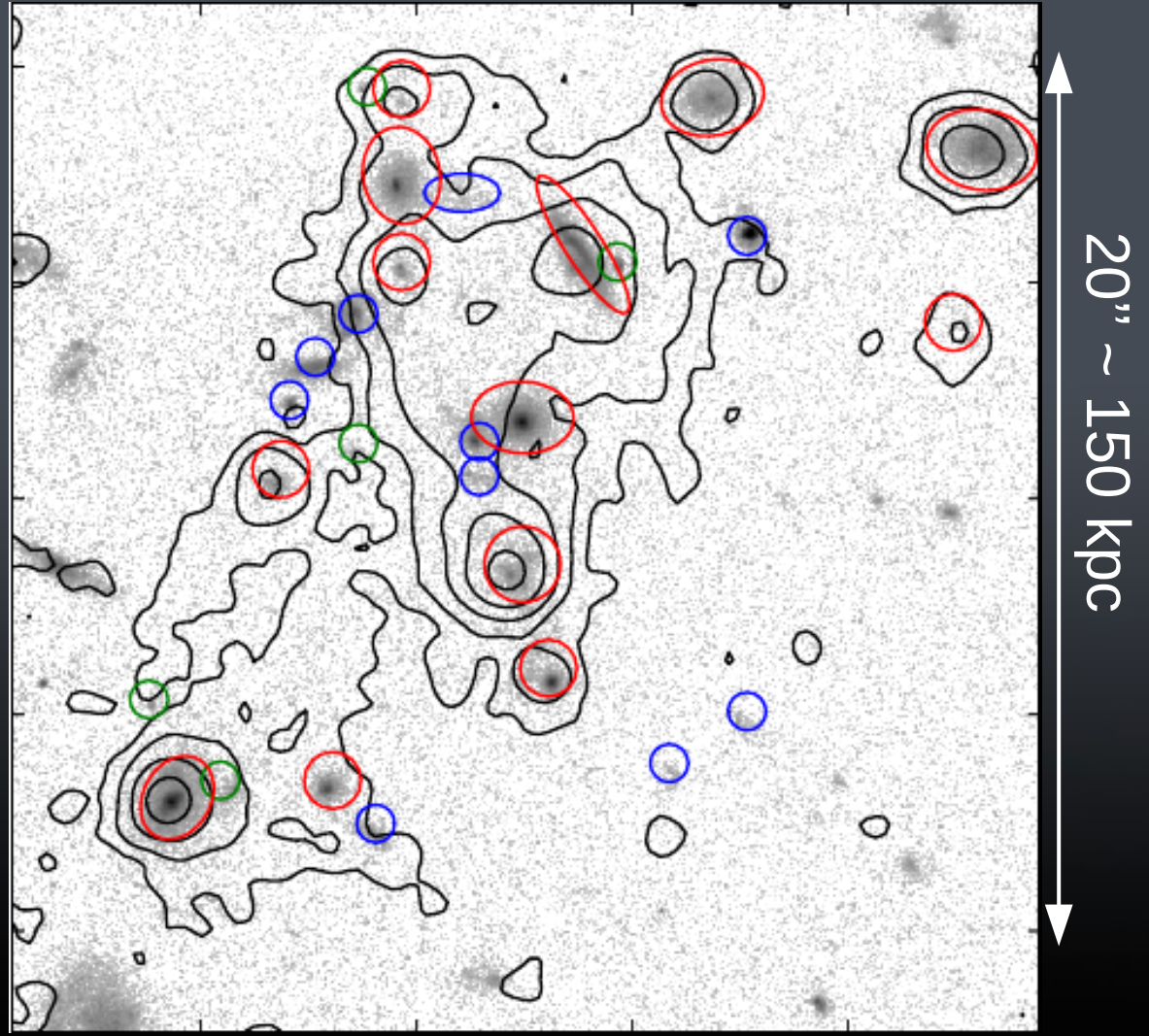
MUSE data:

Observations: 9.75h

Seeing : 0.5" to 0.9"

HST/ACS image F814W
+ MUSE [OII] contours

- Red:** group members
- Blue:** secure foreground and background galaxies
- Green:** no secure redshift



Extended ionised region

Group @ $z \sim 0.7$

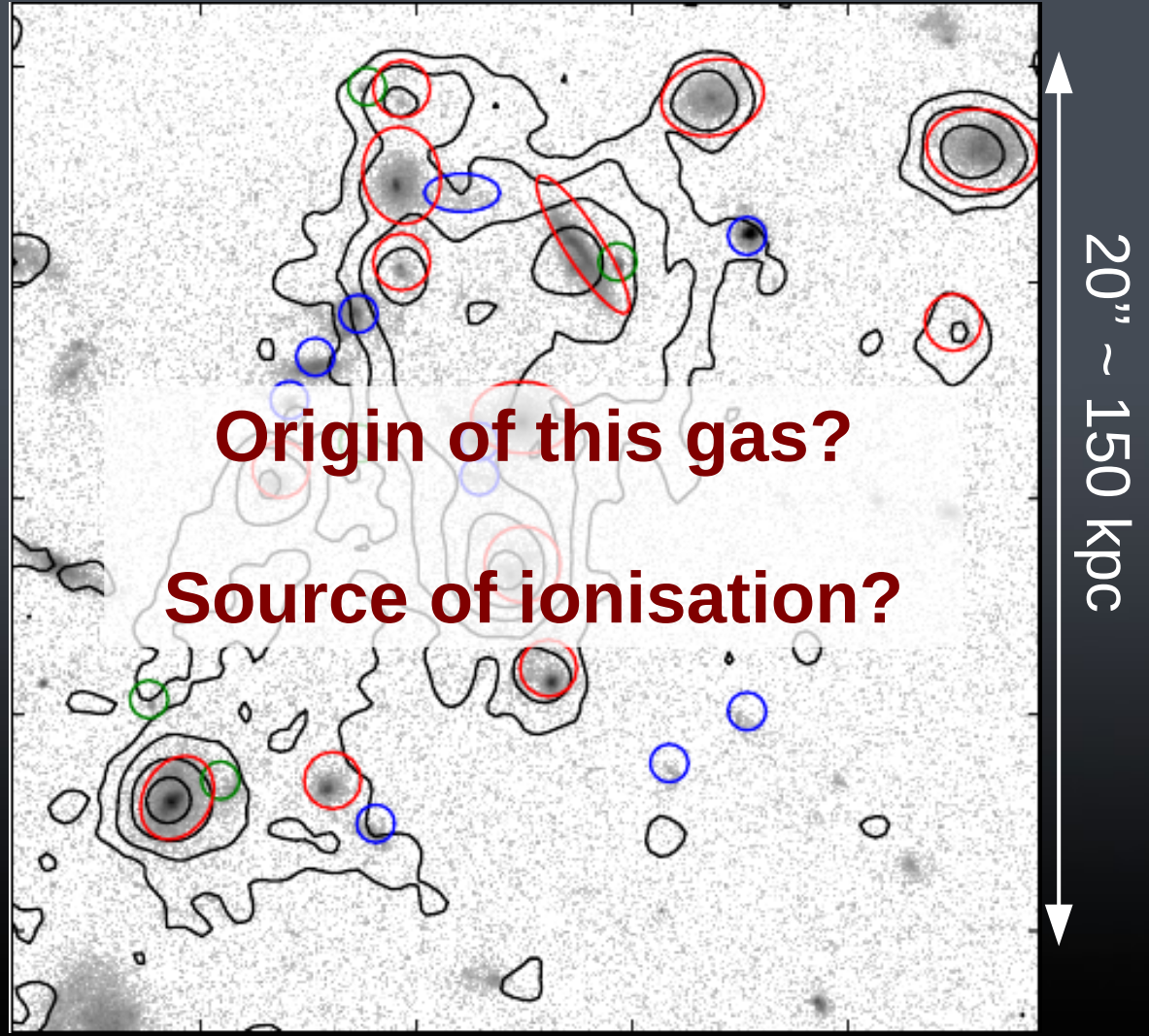
MUSE data:

Observations: 9.75h

Seeing : 0.5" to 0.9"

HST/ACS image F814W
+ MUSE [OII] contours

- Red:** group members
- Blue:** secure foreground and background galaxies
- Green:** no secure redshift

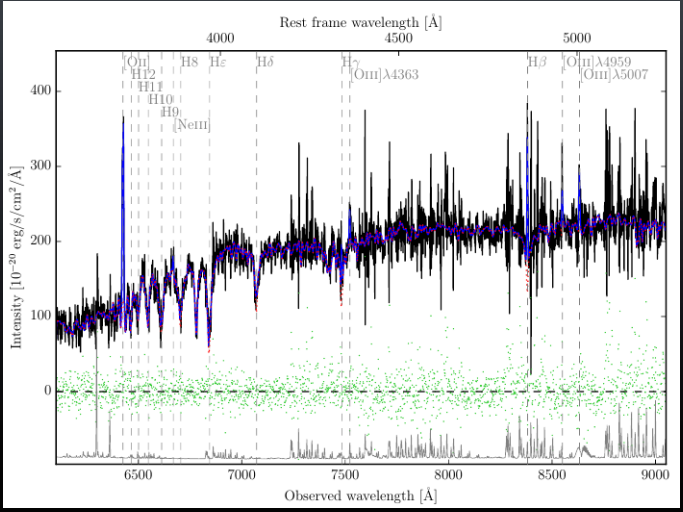
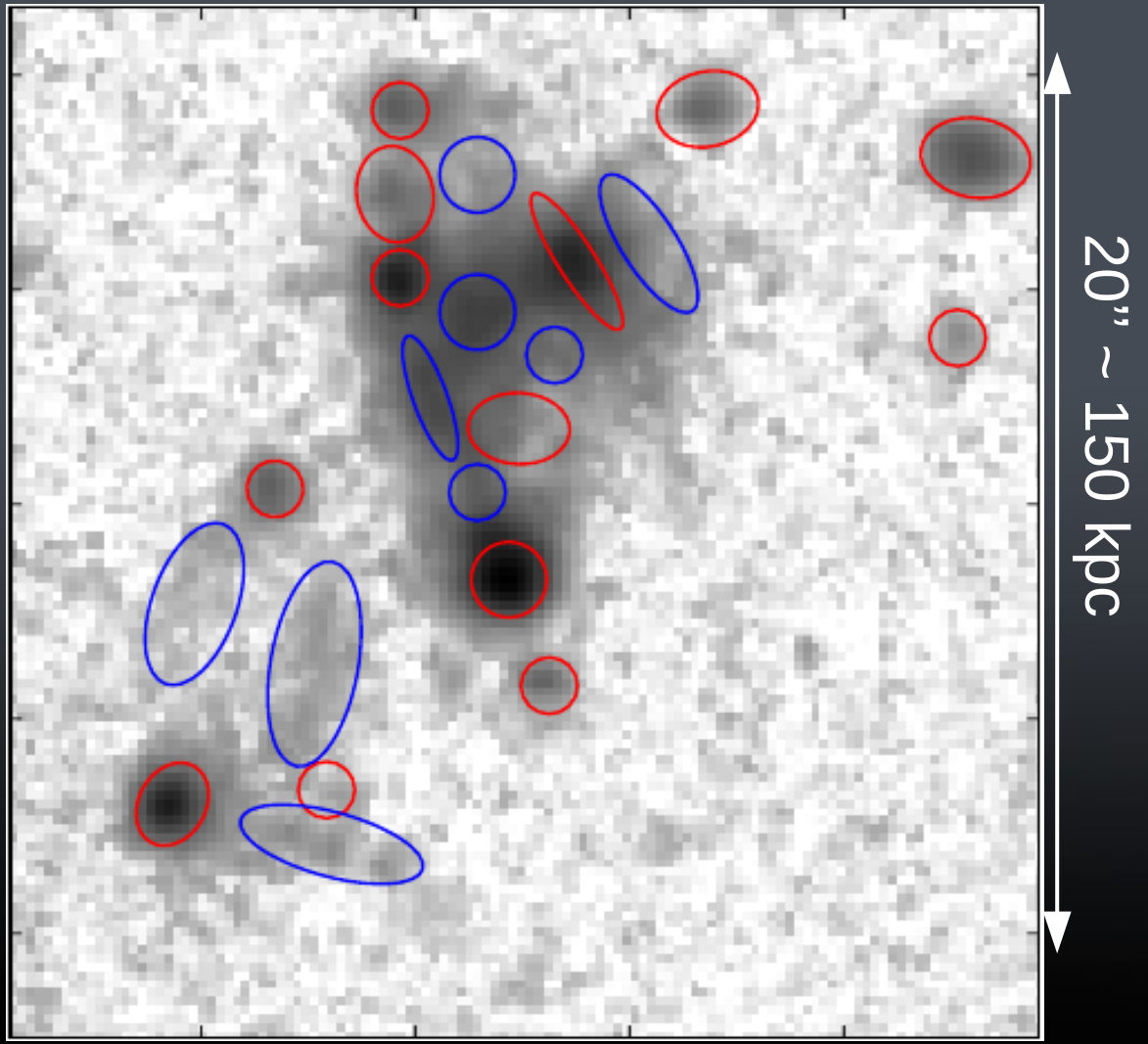


Spectra extraction

MUSE [OII] flux map

Red: group members
Blue: extended regions

Spectra extraction over each region



Line diagnostics

$$R23 = \frac{[\text{OIII}]\lambda 5007 + [\text{OIII}]\lambda 4959 + [\text{OII}]\lambda 3729 + [\text{OII}]\lambda 3726}{\text{H}\beta}$$

Metallicity proxy

$$O32 = \frac{[\text{OIII}]\lambda 5007 + [\text{OIII}]\lambda 4959}{[\text{OII}]\lambda 3729 + [\text{OII}]\lambda 3726}$$

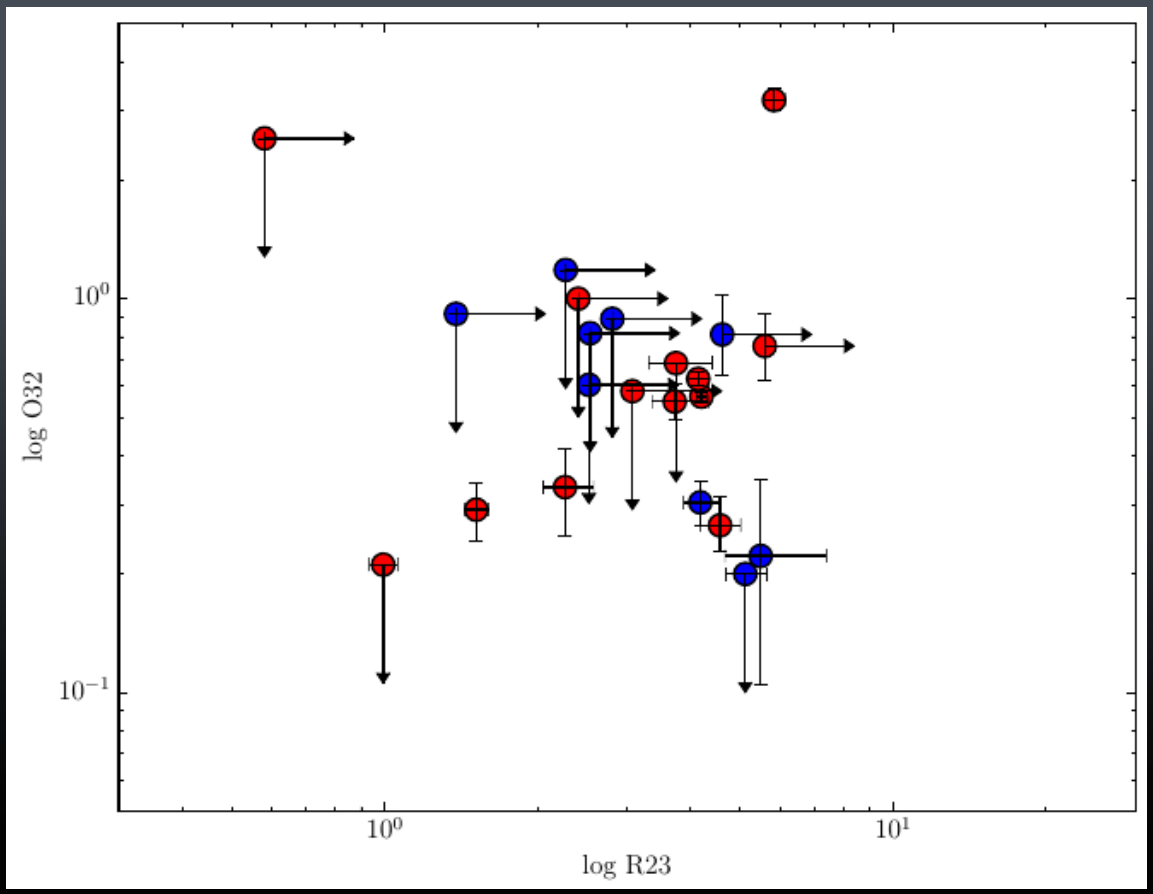
Ionization degree

Red: group members

Blue: extended regions

Extended regions:
typical metallicity of
galaxies

Ionization parameter
seems lower for
extended regions

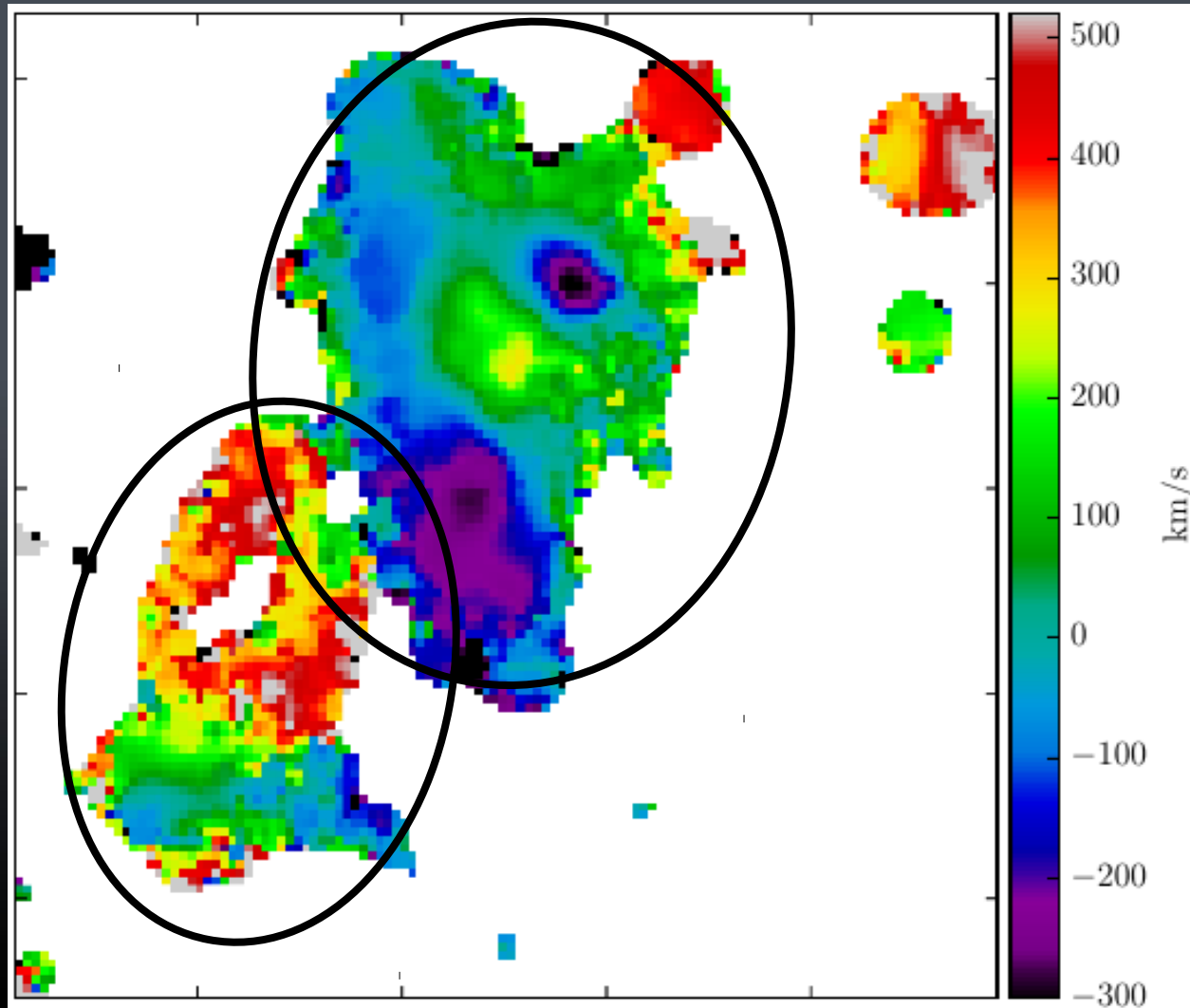


[OII] kinematics

[OII] velocity field

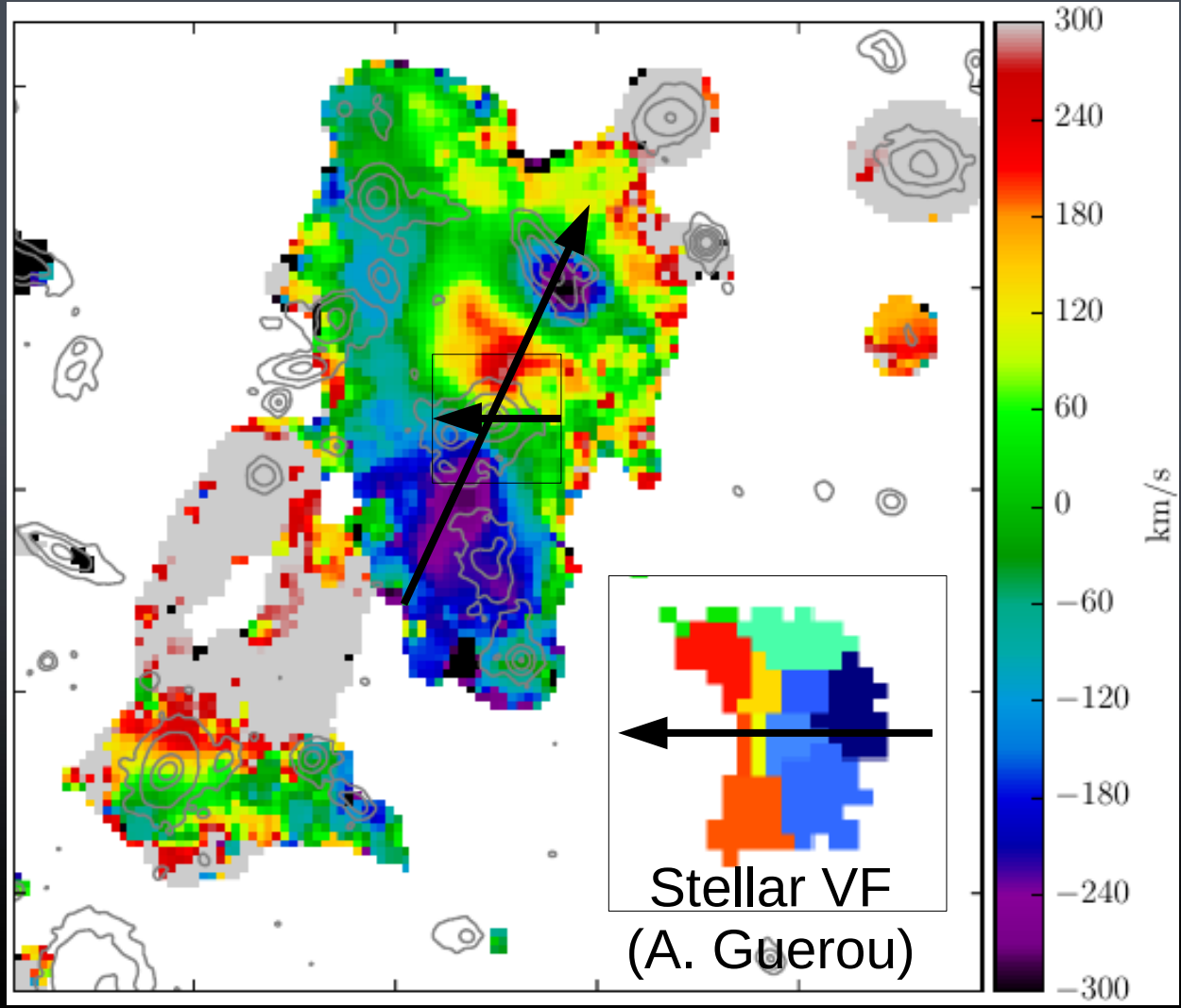
Radial velocity
amplitude: **800 km/s!**

Two kinematically
decoupled regions?



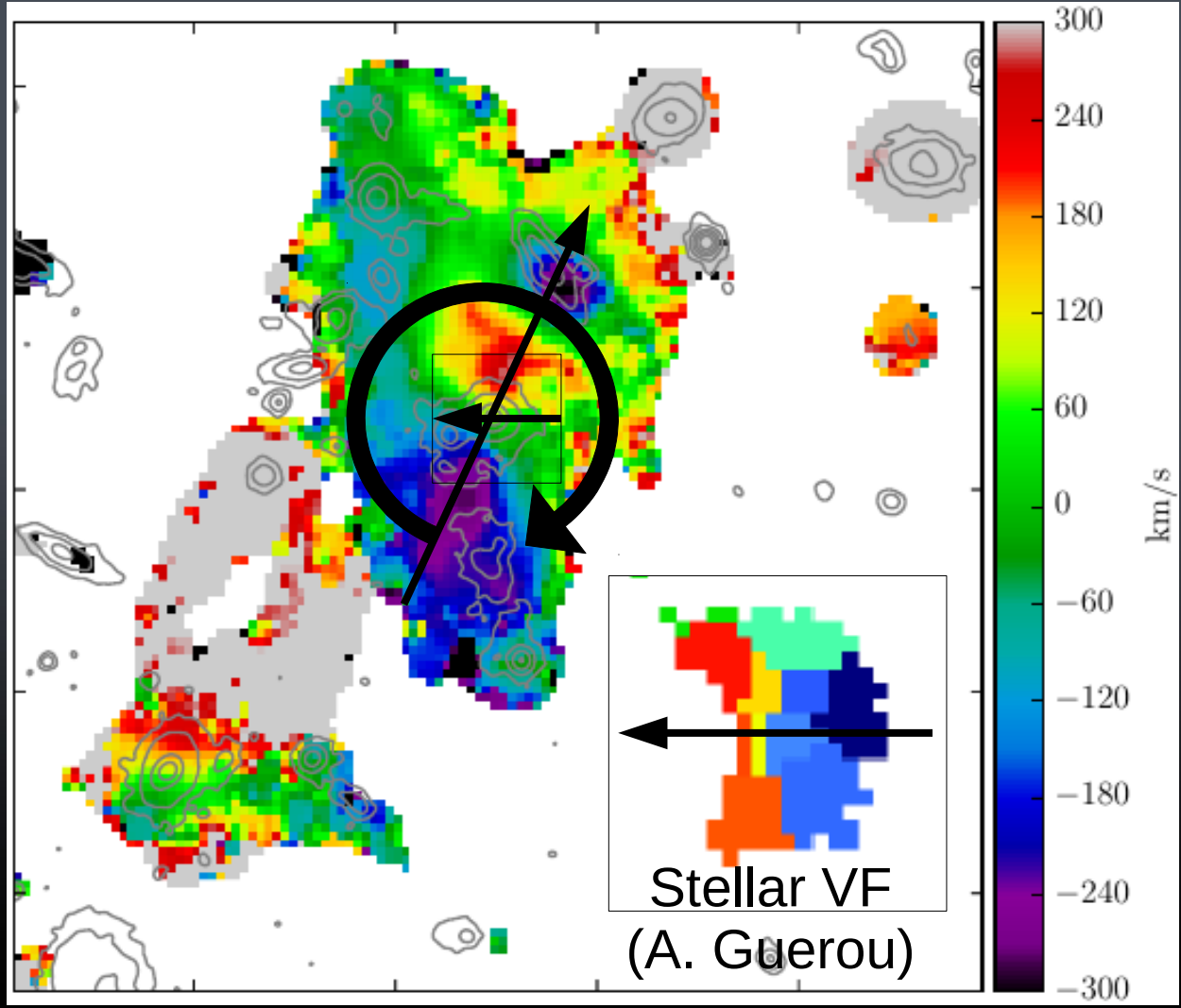
[OII] kinematics

- Gas and stellar spins are different



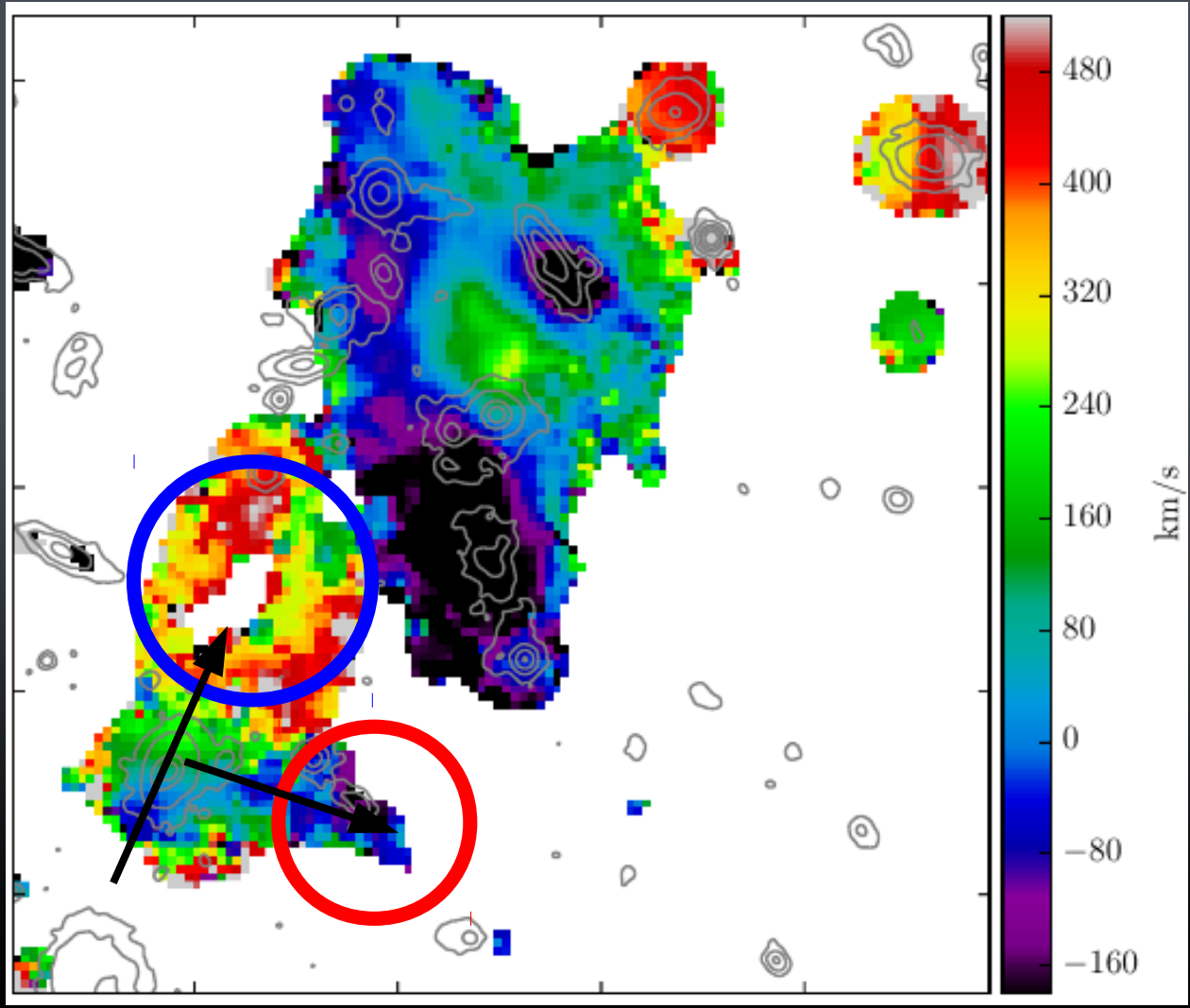
[OII] kinematics

- Gas and stellar spins are different
- Rotation around the most massive galaxy?
- Jets from the massive galaxy?
- Small galaxies follow ionised gas motion: tidal galaxies?



[OII] kinematics

- AGN related regions?
- Link/tails between AGN and satellite?
- Jet?



Ancillary data

- Galactic origin of the gas
 - AGN
 - Tidal interactions
- Source of ionisation
 - Star formation in tidal tails
 - AGN power ?
 - Shocks ?

